

Metal polishes, Ralms & Co.	41,891
Oil cake, vegetable, F. G. Kinney & Co.	41,898
Overalls, pants and blouse or work shirts M. Loeb & Co.	41,886
Pickles, Sterling Pickling Works	41,896
Remedies for cure of anemia, chlorosis, and similar troubles, Dr. A. Gude & Co.	41,920 to 41,924
Remedies for cure of certain named diseases, H. L. Lautemann	41,902
Remedies for venereal diseases, Neher, Ruhe & Welper	41,926
Remedy, cough, A. B. Lipp	41,900
Remedy for all diseases of kidneys, bladder, stomach, and bowels, Vernal Remedy Company	41,903
Remedy for coughs and colds, J. E. Muse	41,919
Remedy for liver and kidney diseases, tablets containing a Yellow Actors Company	41,925
Rubber sponges, Russian American India Rubber Co.	41,905
Shirts, collars, and cuffs, International Shirt and Collar Co.	41,910
Shoes, leather, M. L. Whitcomb	41,889
Soap, F. O. Ives	41,899
Suprarenal gland, product of the active principle of the, H. K. Mulford Co.	41,916
Surgical instruments, metallic, Kny-Scheerer Co.	41,907
Suspenders, Consolidated Manhattan Suspenders Co.	41,911
Tonic, nerve and stomach, J. B. Wells	41,914
Water, purified, Standard Water Purifying Co.	41,892

**LABELS.**

"Buckeye," for crackers, Toledo Biscuit Co.	10,681
"Clay's Sure Cure for Rheumatism," for medicine, E. J. Kieffer	10,689
"Faxon's Black & Green Tea," for tea, W. H. Faxon	10,684
"Grell's Rose Leaf Brand Creamery Butter The Butter That Better the Bread," for butter, H. J. Grell Butter & Egg Co.	10,680
"H. L. C. Tooth Bleach," for dentifrice, L. A. Jackson	10,693
"Kremo Dentine," for tooth powder, T. H. Marshall	10,692
"Martha Washington's Lily of the Valley Cream," for complexion cream, M. M. Benbow	10,694
"Mauna Mountain," for coffee, Acker, Merrill & Condit Co.	10,683
"Nadine Face Powder," for face powder, National Toilet Co.	10,691
"Old Kaintuck," for cigars, H. G. Trompeter	10,687
"Salax," for mineral water, E. Roberts	10,685
"Salix," for medicine, F. L. McClintic	10,688
"Santol," for medicine, H. E. Kelly	10,690
"Seed Balls from Our Potato Fields," for seed potatoes, Johnson Seed Potato Co.	10,678
"Swan Island Brand," for canned salmon, C. L. Benson	10,679
"Toledo Flakes," for flakes, Toledo Biscuit Company	10,682
"Wagner's Lithiated Vichy," for artificial mineral water, W. T. Wagner's Sons	10,686

**PRINTS.**

"Adler's Spring Fashions for 1904, for men's apparel, David Adler & Sons Clothing Co.	886
"Art Shirt Waist," for shirt waists, Raymond & Pierce	885
"Phenolene," for insect destroyers, A. E. Coulson Co.	883
"The Excelsior Dressmakers Fitting Saddle," for dressmakers' fitting saddles, M. L. Soule	884

A printed copy of the specification and drawing of any patent in the foregoing list, or any patent in print issued since 1863, will be furnished from this office for 10 cents, provided the name and number of the patent desired and the date be given. Address Munn & Co., 361 Broadway, New York.

Canadian patents may now be obtained by the inventors for any of the inventions named in the foregoing list. For terms and further particulars address Munn & Co., 361 Broadway, New York.

**RECENTLY PATENTED INVENTIONS. Electrical Devices.**

**INSULATED SUPPORT FOR WIRES.**—L. STEINBERGER, New York, N. Y. The invention pertains to insulated clips, the more particular object being to improve the insulation and to attain certain advantages. The principal object is to insulate the conductor-wire from the hanger devices, span-wires, and poles and also to prevent arcing, surface leakage, and grounding of the current. The ear may be readily replaced when worn out. The insulating-body member will last indefinitely.

**INSULATOR.**—L. STEINBERGER, New York, N. Y. In this instance Mr. Steinberger's improvement relates to insulators for external use, and more particularly to the type commonly designated as "feed-wire" insulators. With many of the feed-wire insulators now in use considerable difficulty is found in securing insulation, especially where currents of high potential are concerned. The idea is to make an insulator which has considerable strength and in which every precaution is taken against leakage of the current.

**Engineering Improvements.**

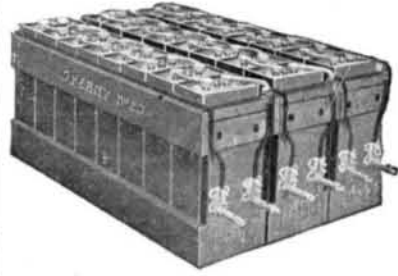
**ROTARY EXPLOSIVE-ENGINE.**—B. BANTA, and C. MATHEWS, Fenton, Mich. The invention is in the nature of an improved engine designed to actuate under an explosive mixture, reversible under two or more propelling impulses in a single revolution, and it primarily seeks to provide an engine of this character of a simple, compact, and durable nature, in which the use of toothed gear-wheels or disk connections are dispensed with and in which the parts are co-operatively arranged to effect an even and uniform operation and in which the action of reversing speed can be quickly accomplished.

**Heating and Lighting.**

**SAFETY GAS-COCK.**—H. J. DOLL, San Francisco, Cal. In this instance the invention pertains to improvements in safety gas-cocks; and the object of the inventor is to furnish a simple device which will insure the complete shutting off of the gas when the key is turned and which will also provide means for regulating the flow of gas independent of the key.

**VAPOR GENERATOR AND BURNER.**—Q. CRANE and J. RESTINE, San Diego, Cal. This vapor apparatus belongs to that class of generators and burners employed for heating pur-

**SPERRY BATTERIES**



FOR ELECTRIC VEHICLES

Manufactured by the  
**NATIONAL BATTERY CO.**  
BUFFALO, N. Y.



FOR GASOLINE CARS

New York Office  
POSTAL TELEGRAPH BLDG.

**The Incomparable WHITE With Limousine Body For Winter Use**

Body detachable and readily replaced by tonneau.

THE Interior seats three people, and is sufficiently warmed from the generator to be comfortable in the coldest weather. No more precaution must be taken with a White to prevent freezing than with a water-cooled gasoline car.

**America's Premier Car**

Renowned the world over for reliability and flexibility of control. Steer the motive power, but so essentially different from ordinary "steamers," that this classification as commonly accepted, does not obtain.

Send for "The White Bulletin"

Sales Offices in all Principal Cities

**WHITE SEWING MACHINE COMPANY CLEVELAND OHIO**

**5,000 sq. ft. of BLUE PRINTS in 24 Hours**

THE FRANKLIN AUTOMATIC CONTINUOUS FEED ELECTRIC BLUE PRINT MACHINE prints continuously by Electric Light, day or night. Handles tracings of any length, size or kind. The tension is automatic and does not depend on skill of operator. Used by largest railroads and United States Government. Patented in United States, Canada and Europe. Made in two sizes, for 8 and 42-inch tracings. Send for descriptive circular.

WILLIAMS, BROWN & EARLE, Dept. L, 918 Chestnut St., Philadelphia.

**AUTOMOBILE WHEELS**

The P. & B. Tubular Steel Wheel is the best and strongest wheel made. Write for full information together with prices on quantities. The P. & B. Wheels are sold under a strong guarantee. Made true and stay true.

**THE PARISH & BINGHAM CO.**  
1300 Hamilton St., Cleveland, O., U. S. A.

**ARMATURE WINDING, RIGHT AND Left Handed.**—An important paper for all amateurs. 17 illustrations. SCIENTIFIC AMERICAN SUPPLEMENT, No. 1139, price 10 cents. For sale by Munn & Co. and all newsdealers. Send for catalogue.

**CRESTMOBILE \$750**

The BEST CAR Built in America

Proved by its Splendid Records. Tonneau for Four, \$850.

Other LOW Priced Models. Export Prices \$90 Extra.

CREST MFG. CO., Cambridge, Mass., U.S.A.

**\$12 PER WEEK STEADY INCOME**

Work at home. Send addressed envelope. You can start work the moment you receive our reply. No canvassing. Nothing to sell. Dep. S. A.

United Product Co., 200 B'wa, N. Y.

**THE STEAM TURBINE; THE STEAM Engine of Maximum Simplicity and of Highest Thermal Efficiency.** By Prof. R. H. Thurston. A valuable series of articles having cuts of some of the more efficient engines of this type—the Parsons', DeLaval, Dow, etc.; with exhaustive tables giving the result of tests and much general data on the subject. Contained in SUPPLEMENT Nos. 1306, 1307 and 1308. Price 10 cents each. For sale by Munn & Co. and all newsdealers.

poses, and the object is to provide features of construction which afford a very simple, inexpensive, practical, and convenient generator and burner that may be placed in the fire-chamber of a heating-stove, a kitchen-range, or a steam-boller for the generation and combustion of gaseous fuel therein from hydrocarbon liquids.

**Machines and Mechanical Devices.**

**PUNCHING AND SHEARING MACHINE, ETC.**—R. NORRIE, Rangoon, British Burma, India. In order to obviate defects in other machines for cutting metal, Mr. Norrie has devised a special form of shears in which instead of only cutting edges a blade works in between two other cutting edges, which has the effect of shearing out strips of the material being cut. This blade is mounted so as to enable the material being worked to pass on either side of it, which enables any length of cut to be made.

**AUTOMATIC WEIGHING-MACHINE.**—W. BROUGH, Baltimore, Md. In this patent the invention is an improvement in automatic weighing-machines, and is especially designed for use in weighing granular or pulverulent or powdered substances and may be employed to advantage in the weighing of coffee, tea, sugar or the like, and without any wasting of the material.

**LIQUID-MEASURE.**—H. J. BRANTLEY, Valdosta, Ga., and J. C. BRANTLEY, Marksville, Miss. The invention is an improvement particularly in that class of measures illustrated in an application for a former patent filed by these inventors. The present invention relates to improvements in the construction of the measuring vessel, in the connections thereof with the barrel or cask, so the measuring vessel can be leveled when applied for use, in the means for venting the measuring vessel and the cask, and in other improvements.

**ADDING-MACHINE.**—P. BURESH, Mapleleaf, Iowa. The purpose in this improvement is to provide a reliable machine of very simple construction and which may be conveniently and quickly operated and applied directly to the columns of figures to be added, and further, to provide an indicator which as the machine is moved down a column to be added will be at the right or at the left, or which may be made to cover or conceal the last figure added.

**THREADING DEVICE.**—S. B. BATTEY, New York, N. Y. In the present case the object of the improvement is to provide a threading device designed either for hand use or for use on sewing-machines to automatically push the sewing-thread through the needle-eye whenever the device is in active position and the needle moves into an uppermost position.

**THREADING DEVICE FOR SEWING-MACHINES.**—S. B. BATTEY, New York, N. Y. In this patent the purpose of the invention is the provision of an improved threading device for sewing-machines arranged to automatically thread the needle in case the thread breaks, hence requiring no stopping of the machine for threading purposes. The operator may throw the threading device into action at any time in case the automatic thread-controlled device should fail.

**ECCENTRIC-SCREW BREECH-CLOSING-DEVICE.**—P. DE NORDENFELT and E. TERNSTRÖM, 8 Rue Auber, Paris, France. In this patent the invention relates to an arrangement for facilitating the operation of the eccentric screw, particularly in heavy ordnance. Endeavors have already been made to facilitate such operation by means of bearing-balls on which the screw turns with less friction. However, this means is only an insufficient palliative in the case of heavy ordnance, because it does not diminish the variable resistance arising from the eccentric position of the center of gravity of the screw relatively to the axis around which it rotates.

**SELF-THREADING SEWING-MACHINE.**—DR. SUMNER B. BATTEY, 152 W. 49th Street, New York, N. Y. To do away with the perplexing necessity of any hand manipulation in threading a sewing machine, the inventor has devised a novel and simple construction of sewing machine, the salient feature of which is the mechanism which operates the threading device. This mechanism comprises a rocking lever, fulcrumed in a vertical slot on the inside of the machine head and operated by a cam in the periphery of a cam disk. The method of operation is as follows. When the machine is started, and the needle-bar in its travel upward has reached the height of its stroke, the cam, which is an offset and at the same time a continuation of a groove around the cam disk, engages the upper end of the fulcrumed lever and causes it to rock outward, thereby imparting an inward motion to the lower end of the lever and passing a plunger, carried by the lever through a guide way for the thread. The thread is thus pushed through the eye of the machine needle, whereupon it is caught by a rotating hook. The needle is then completely threaded before it enters the cloth, the entire operation taking place before a complete revolution of the machine has been completed, and consequently before a stitch has been made. The whole mechanism is thrown out of operation at near the end of the downward stroke of the needle bar and does not work again unless the thread breaks, when the operation of automatic threading is repeated by mere touching of a button.

**SHUTTLE-THREADED.**—O. R. JACQUES,

Manchester, N. H. The object in view is to provide a sanitary device adapted to pneumatically draw a thread through the eye of a shuttle. Mechanical means create a suction in a direction to draw a thread through the eye, and this saves the operator placing an unclean shuttle to the lips, so as to create a suction by inhalation for threading the shuttle, and overcomes the inhalation of particles of dyed yarns and threads, the latter being poisonous to the health.

**MACHINERY FOR THE MANUFACTURE OF HORSESHOE-NAILS.**—J. M. LAUGHLIN, Fourchambault, Nièvre, France. By this machine all kinds of nails or nail-blanks or finished nails of the French, American, and other types may be made, and it will be understood that the rods from which the blanks or nails are to be cut may be rolled of any form to suit the type of nail-blanks or nails to be made. For instance, the rod intended more particularly for making French nails may be rolled so as to present the same profile on both faces. The machine is also adapted for directly cutting out completely-finished nails. The nails are made from a wire or rod of wrought-iron or mild steel rolled either hot or cold.

**FAN ATTACHMENT FOR SEWING-MACHINES.**—M. STEINER, New York, N. Y. The object of this invention is to provide means for fanning the operator, and in attaining this end the inventor provides a peculiarly-constructed fan which is attached to the shaft carrying the fly-wheel of the machine, or to the fly-wheel itself, so that as soon as the machine is operated the fan is turned and a current of air is produced.

**CONCENTRATOR.**—D. MCL. STOREY, Weeping Water, Neb. The invention refers to concentrators such as shown and described in the application for former Letters Patent, filed by Mr. Storey. The object of the present invention is to provide a concentrator designed for treating materials from stamp-mills or from placers to effectively separate the precious metals from the tailings.

**GOVERNOR FOR FEEDERS OF THRESHING-MACHINES.**—W. C. PETERSON, Geneva, Neb. The aim of this inventor is to provide an adjustable bundle-carrier so constructed that it can be folded under the feeder when desired and a feed-roller and shield for the same by means of which the amount of grain being fed to the cylinder is regulated and controlled automatically after the amount of pressure required to raise the shield has been determined upon.

**CENTRIFUGAL MACHINE.**—M. DE MARCHÉVILLE, 44 Rue de Château Landon, Paris, France. In this patent the invention refers to a centrifugal hydro-extractor whereof the basket or drum is in the form of a truncated cone, the bottom being at the larger base, while the smaller base is entirely open and, unlike the usual form, devoid of internal flange, thus permitting the use of an extractor having an alternating rectilinear movement and capable of passing completely out of the drum, which in consequence of its form will retain the material under treatment, notwithstanding the absence of any internal flange.

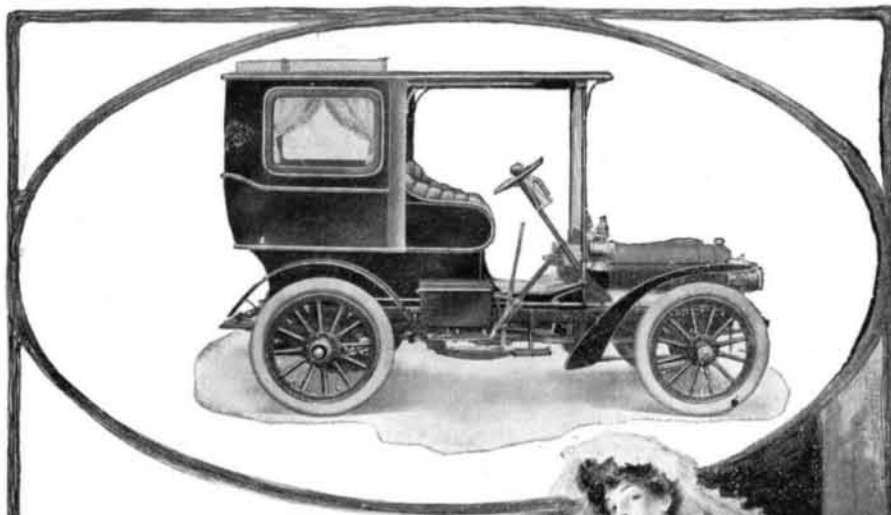
**TREADLE MECHANISM FOR LIGHT MACHINERY.**—J. WIEBE, Whitewater, Kan. The object of this improvement is to provide a mechanism more especially designed for use on washing-machines, churns, and other light machinery, the mechanism being arranged to enable the operator to turn the main shaft of the machine to be driven for a considerable length of time without much physical exertion on the part of the operator.

**PACKING-MACHINE FOR PLASTIC MATERIALS.**—J. C. THOM, Helmetta, N. J. This invention relates to improvements in machines for packing material into jars, bottles, cans, or other receptacles. In packing plastic or damp material—such, for instance, as snuff—considerable difficulty is found in that the material or a portion thereof adheres to the conveyor and retards the packing, and therefore one object of the invention is to provide a novel form of conveyor by means of which the above difficulty is overcome.

**ROLLS FOR USE IN THE PRODUCTION OF SHEET-METAL STRIPS.**—G. B. JOHNSON, 8 Victoria Street, city of Westminster, London, England. This invention pertains to improvements in the rolls used in a machine for rolling sheet-metal strips to a curved, reversely-curved, or other form in cross-section (for fencing standards, "droppers," and pales, guttering, sash-bars, and the like) for which previous Letters Patent were granted to Mr. Johnson; and the invention has for its object to obviate rubbing friction on the opposite sides of the strips consequent on difference of surface velocity of the rolls of a pair.

**TILE-MACHINE.**—D. E. FORTON, Ewart, Mich. By means of this machine tile may be readily and accurately formed. In operation the parts being assembled, the cement is entered at the top, while the core is rotated. The spiral flange carried by the core forces the material downward, first to the bottom, and filling as cement is supplied, and after forming the main portion of a tile the upper enlarged portion will be formed. The tile is readily removed, or the sections of the outer casing may be separated therefrom, because of the paper lining, which prevents the material sticking to the casing surface.

**MUSIC-LEAF TURNER.**—P. ENGELKING and F. C. ENGELKING, Peters, Texas. One of the principal objects of this improvement is



**The Luxury of Living**  
finds fullest expression in the perfect appointments and absolute safety of  
**Peerless Direct Drive Touring Cars**  
\$2,800 to \$6,000

The new Peerless Limousine Car is the highest attainment in American automobile construction; the acme of ease, comfort and elegance.

Photogravure of "The Peerless Girl III" here illustrated, size 18x29 inches, without advertising, mailed you for 10c stamps or coin. Write for new catalogue.

**The Peerless Motor Car Co.,**  
Cleveland, Ohio, U. S. A.

Member Association Licensed Automobile Manufacturers.



**To Nassau  
The West Indies  
and  
Bermuda**

By the "PRINZESSIN VICTORIA LUISE"  
Most perfect cruising craft afloat

**FROM NEW YORK, MARCH 8, 1904**  
**FROM NASSAU, MARCH 11, 1904**  
**FROM HAVANA, MARCH 14, 1904.**

Itinerary:—NASSAU, HAVANA, SANTIAGO DE CUBA (Cuba), PORT ANTONIO, KINGSTON (Jamaica), SAN JUAN (Porto Rico), ST. THOMAS, BRIDGETOWN (Barbados), FORT DE FRANCE, ST. PIERRE (Martinique), BERMUDA, NEW YORK.

**25 Days—\$175 and up**

On this trip steamer calls at Nassau and Havana first, where passengers who are South can join, visiting all the interesting islands in the West Indies, including a stay of 30 hours in

**BERMUDA**  
and be back again in New York the day before Easter.

Bookings For Cruise Leaving February 6 are Now Complete

**HAMBURG-AMERICAN LINE,**  
35-37 BROADWAY, N. Y.  
Telephone No. 1871 Broad.

to construct a music-leaf turner which may be used in connection with any sort of a musical instrument, such as a piano or a violin, and which shall be positive in its operation and shall have the parts so correlated that the music will be turned sheet by sheet.

**KINETIC-ENERGY MACHINE.**—E. L. N. DENIS, 135 Boulevard Ménilmontant, Paris, France. The invention forming the object of this application for a patent is relative to a system of mechanism acting on the principle of *vis viva*, the movement of which is *deshmodynamical*, and which is applicable to punches, scales, cutters, hammers, and the like. The invention consists of a mechanism of transmission between a heavy body and a gearing-shaft having a rotary and uniform motion.

**WEIGHING AND PACKAGING MACHINE.**—T. J. BROUGH, Baltimore, Md. Mr. Brough's invention is an automatic machine adapted for measuring and weighing pulverulent substances or those of allied character, such as tea, coffee, spices, etc. The material being measured and weighed is prevented from being packed, through the operation of means practically self-discharging and at the same time that duly agitate and remove the material from the hopper.

**Of Interest to Farmers.**

**COTTON-STALK PULLER.**—C. R. SMITH, Gonzales, Texas. The intention in this instance is to provide a construction by which a powerful pull may be exerted on the stalks for the purpose of extracting the stalks and roots as the machine crosses the field, whereby the stalks may be collected and cremated for the destruction of insect pests, such as the cotton-weevil, and the ground may be prepared without the labor of first plowing to eliminate the cotton-stalk roots.

**DISK CULTIVATOR-PLOW.**—E. B. LEE and C. H. BEAZLEY, Leesburg, Ga. One of the principal objects of the inventors is the provision of means for overcoming numerous disadvantages found in cultivator-plows of the disk form and also to provide a plow of this character which is simple and comparatively inexpensive to manufacture, as well as easily adjusted, and comprising but few parts not liable to get out of order or become easily broken or dislocated. Soil of any kind may be admirably bedded and otherwise operated upon by the use of the improvements.

**CUTTER-BAR FOR MOWING-MACHINES.** W. W. JONES, Downs, Kan. The purpose in this case is to so construct a cutter-bar especially adapted for field-machines that the sickle-bar will have a uniform and firm support throughout the length of its travel and in operation will be protected from dust, gum, or any material likely to crowd its action, thereby insuring the least possible amount of friction and enabling both bars to be made lighter and wear longer than usual.

**HAY-PRESS.**—J. C. DAMRON, Roanoke, Va. Mr. Damron's invention is an improvement in baling-presses especially designed for baling hay, but which may be used for other material when desired. In carrying out the invention he employs a bale-box, together with suitable framing for the press, which bale-box and framing may be in general respects and some exceptions, of ordinary construction.

**Pertaining to Vehicles.**

**STEERING-GEAR FOR MOTOR-VEHICLES.**—L. RENAULT, Billancourt, Seine, France. In this instance the invention has reference to steering-gear for motor and other vehicles; and the improved apparatus presents the advantage of realizing a steering almost completely irreversible, very solid, and not wearing away, since the screw works normally without the intervention of a lever-arm. Furthermore, the cylindrical screw permits of employing a nut of very great length and bearing consequently on a large surface.

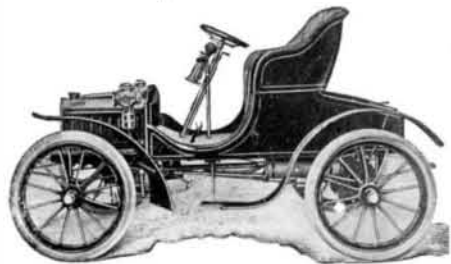
**BALL-BEARING WHEEL-HUB.**—B. P. YOUNG and H. W. RAND, Vancouver, Wash. In this patent the invention has reference to improvements in ball-bearing wheel-hubs for vehicles; and the object the inventors have in view is the provision of a construction adapted to be readily applied to ordinary wooden hubs of any size and style which insures easy running of the hub on the axle-spindle and is thoroughly dust-proof.

**Railways and Their Accessories.**

**SWITCH MECHANISM.**—J. W. OSBORNE, Exeter, Ill. In this patent the invention relates to improvements in switch mechanism for railways, the object being to provide a mechanism of this character of simple construction that may be operated in one direction by a device carried by a car and under the control of the motorman or other attendant.

**INCLINED RAILWAY.**—S. E. JACKMAN, New York, N. Y. The aim in this invention is to provide a switch-back railway arranged to allow two cars to race by their own momentum down adjacent tracks to afford exciting rides for the passengers, especially as it is possible for the car on the outer longer track, loaded heavier than the car on the inner shorter track, to outstrip the car on the shorter or inner track. Mr. Jackman has invented another inclined railway wherein the object is to provide a switch-back railway arranged for racing two cars by their own momentum down adjacent separate continuous tracks, crossing each other twice above grade and in reverse

**"THE COVERT"**



**THE IDEAL LIGHT CAR FOR TOWN OR COUNTRY**

Superior in Construction. Efficient under all Conditions. Artistic in Design. Thoroughly Up-to-Date. Simplicity, Reliability, Lightness and Strength are combined in its make-up

Price, Complete, \$750

**Covert Motor Vehicle Co. LOCKPORT, N. Y.**

Send for Illustrated Catalog

**ELECTRO MOTOR. SIMPLE, HOW TO MAKE.**—By G. M. Hopkins. Description of a small electric motor devised and constructed with a view to assisting amateurs to make a motor which might be driven with advantage by a current derived from a battery, and which would have sufficient power to operate a foot lathe or any machine requiring not over one man power. With 11 figures. Contained in SCIENTIFIC AMERICAN SUPPLEMENT, No. 641. Price 10 cents. To be had at this office and from all newsdealers.

**SMOOTH RUNNING**

Automobiles, Gas Engines, Launches

**and MONOGRAM OILS**

Specially Adapted

**are SYNONYMOUS**

Write for Catalog

**COLUMBIA LUBRICANTS COMPANY OF NEW YORK**

116 Broad St., New York City

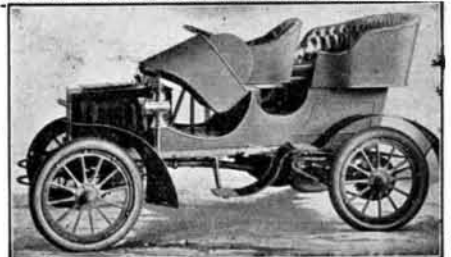
When touring you will find different grades of "MONOGRAM OIL" at all "Blue Book" Stations.

**THE SOOT PROOF SPARK PLUG**

Guaranteed Soot Proof



C. A. MEZGER, 203 W. 80th St., New York



**REGAS**

Air-Cooled Automobile

Maximized Strength, Lightness, Speed, Safety, Style and Comfort, at a minimum of first cost and final expense. New and distinctly novel design. A light Tonneau Car with side entrance. A novelty in this country. Obviates dismounting in muddy roads. A model of perfection in design, mechanism, workmanship and material, this scientifically-constructed machine of 12 horse power at a speed of 1,200 revolutions per minute, moves with almost a complete elimination of vibration. The Regas is especially constructed to resist all kinds of strains, achieve a high percentage of mileage, and at the same time retain the distinct advantages of smooth running, ample convenience and ease of operation. Any ordinary ability is sufficient to master the details of this simple and luxurious car.

PRICE \$ 1 500

**REGAS AUTOMOBILE COMPANY Rochester, New York**

**STEERING WHEELS**

FOR AUTOMOBILES AND LAUNCHES

of Every Description and all Sizes CENTAUR MOTOR CO., Buffalo, N.Y.

order, to render the tracks approximately alike in length, in inclination, and at the crossing, to make the chances equal for either car to reach the station first.

**CAR-SEAT.**—B. REPSDORF and W. H. BURTON, Houston, Texas. In this patent the invention is an improvement in car-seats, being especially intended to provide a novel construction whereby seats and the backs thereof may be adjusted to form a bed for use when desired. The backs are upholstered alike on both sides, and one back will operate as a pillow for the passenger when the parts are adjusted.

**Miscellaneous,**

**SHOULDER-PAD.**—H. LAVINE, New York, N. Y. The invention pertains to improvements in shoulder-pads for coats or like garments, an object being to provide a pad so constructed as to maintain a gradually-increasing thickness from one edge to the other, thus preventing any abrupt depressions in the shoulder portion of a coat or the like in which the pad may be placed.

**DISTANCE OR RANGE-FINDING INSTRUMENT.**—T. ADAMSON, New York, N. Y. Mr. Adamson's improvements are intended more especially for use upon marine vessels and the like, and the principal object is to provide an instrument of this kind whereby the navigator is enabled to ascertain at any time the distance of the vessel from a given distant point ahead—as a lighthouse, for instance—and also to likewise ascertain the distance the vessel will be from such a point when abreast of the same.

**CHART OR PATTERN FOR CROCHET-WORK.**—EMILY C. FAUST, Kasson, Minn. In this instance the invention has reference to apparatus; and the inventors object is to provide a new and improved chart or pattern more especially designed for use in crocheting jackets and like garments and arranged to guide the worker in such a manner as to insure the formation of a well-fitting garment.

**POCKET DEVELOPING AND FIXING DEVICE.**—R. R. LUTZ, San German, Porto Rico. In this patent the invention pertains to a portable developing and fixing device; and one object in view is to furnish a compact construction adapted to be easily carried in the pocket, and to be used in the daylight for developing, washing, and fixing photographic plates without exposing them to the action of injurious light-rays.

**JAR-CLOSURE.**—C. H. NICHOLSON, New York, N. Y. The object of the improvement is to provide a jar-closure which is simple and durable in construction, cheap to manufacture, and arranged to hermetically seal the jar and preserve the contents thereof against deterioration. To open the jar, an air passage is easily formed through the exposed rubber ring by inserting any sharp instrument under the outer beveled edge of the V-shaped rim of the cover.

**PESSARY.**—F. L. PRIEST, Dallas, Texas. The invention relates to mechanical means for supporting the womb, relieve menstruation, and provide for drainage in ulceration. The appliance is made so as to avoid abrasion of tissue; it may be conveniently self-applied or removed, and worn without discomfort any length of time, and will afford safe and reliable means for the application of medicaments to diseased parts, or a tampon to check hemorrhage.

**MATCH SAFE AND LIGHTER.**—C. F. A. CAMMANN, New York, N. Y. The object of the invention is to provide an improved match safe and lighter arranged to permit of conveniently igniting matches without danger of ignited particles or sparks flying into the room and firing curtains and the like and to allow of holding the match in position for convenient each by the user and for immediate ignition, especially in the night.

**STEREOSCOPE.**—W. F. FOLMER and A. M. LAWRENCE, New York, N. Y. The purpose in the present case is to provide a stereoscope so constructed that a view, no matter of what character, taken with stereoscopic lenses may be placed in the instrument without the object being mechanically reversed, as is customary, and through adjustment of the lenses to optically reverse the object, whereby to obtain proper stereoscopic effect.

**NOTE.**—Copies of any of these patents will be furnished by Munn & Co. for ten cents each. Please state the name of the patentee, title of the invention, and date of this paper.

**The Current Supplement.**

The current SUPPLEMENT, 1465, opens with the first installment of a very exhaustive description of the Edison Portland Cement Works, illustrated by a full set of photographs and diagrams. "Grape, Raisin, and Wine Production in the United States" is the title of a well-illustrated article continued from the last number. The list of grants made by Carnegie Institution is continued. The Paris Automobile Show is made the subject of an article by the Paris correspondent of the SCIENTIFIC AMERICAN, in which he discusses novel details of construction which distinguish some of the vehicles exhibited. The usual Engineering Notes, Trade Suggestions from United States Consuls, and Selected Formulae will be found in their accustomed places.



**— Electric —**

ELECTROBILE

ROAD WAGONS

RUNABOUTS

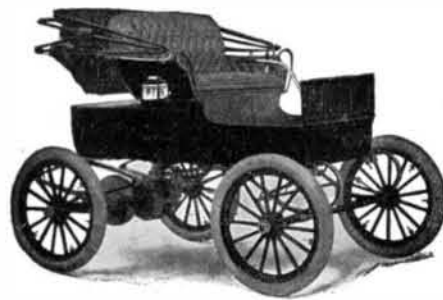
STANHOPE

TRAPS and Divided Battery Model for the Edison Battery



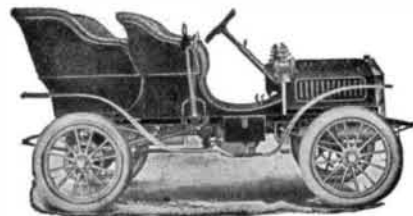
Advance Sheets and Catalogues now ready. A few good local representatives wanted in unoccupied territory.

**National Motor Vehicles**



**— Gasoline —**

Two New 4-Cylinder Touring Cars, Bevel Gear Drive, Pressed Steel Frame, and many other desirable features of practical worth.



**National Motor Vehicle Company**  
900 East 22d Street INDIANAPOLIS, IND.

**\$2,000 AIR-COOLED \$2,000**

**SANTOS DUMONT**

The Flying Automobile

**Built To Go, Easy Riding, Four Cylinders, Weight 1800 Pounds; Made To Stand, Ample Power, 20 Horsepower, Over 1 h. p. to each 100 lbs.**

Its elegance of appointment recommends it to people of quality. Having adopted the very latest design we are unable to show a cut here. Full illustrated catalogue sent on request.

COLUMBUS MOTOR VEHICLE CO.

**\$2,000 Columbus, Ohio \$2,000**

**KNOX WATERLESS GASOLINE CARS**

**Have A Reputation! Made Upon Honor Sold Upon Merit Known as the Best**

THE most reliable motor on wheels. The Car That Obviates the "Tow." Built for practical use with elegance thrown in as an optical relish.

Those who use a "Knox" swear by it, because it is reliable as good character. Knox cars give comfort and confidence, speed and durability, beauty and sport unalloyed by breakdowns. Most perfect motor mechanism ever devised—no water to freeze in winter—no overheated engine (it's automatically cooled by air) no delicate parts, no intricate problems, no strain on the nerves of the driver (patent steering gear does it), no cheap workmanship. Better get in line for 1904.

**TONNEAUS, SURREYS AND RUNABOUTS.....**

Six Styles Passenger Cars and Six Styles Commercial Cars to Choose From

Send for Catalogue

**KNOX AUTOMOBILE CO., - - - Springfield, Mass.**

Member Association of Licensed Automobile Manufacturers. Selling Agencies in All Large Cities.

