

Metal polishes, Ralms & Co.	41,891
Oil cake, vegetable, F. G. Kinney & Co.	41,898
Overalls, pants and blouse or work shirts M. Loeb & Co.	41,886
Pickles, Sterling Pickling Works.	41,896
Remedies for cure of anemia, chlorosis, and similar troubles, Dr. A. Gude & Co.	41,920 to 41,924
Remedies for cure of certain named diseases, H. L. Lautemann.	41,902
Remedies for venereal diseases, Neher, Ruhe & Welper.	41,926
Remedy, cough, A. B. Lipp.	41,900
Remedy for all diseases of kidneys, bladder, stomach, and bowels, Vernal Remedy Company.	41,903
Remedy for coughs and colds, J. E. Muse.	41,919
Remedy for liver and kidney diseases, tablets containing a Yellow Actors Company.	41,925
Rubber sponges, Russian American India Rubber Co.	41,905
Shirts, collars, and cuffs, International Shirt and Collar Co.	41,910
Shoes, leather, M. L. Whitcomb.	41,889
Soap, F. O. Ives.	41,899
Suprarenal gland, product of the active principle of the, H. K. Mulford Co.	41,916
Surgical instruments, metallic, Kny-Scheerer Co.	41,907
Suspenders, Consolidated Manhattan Suspenders Co.	41,911
Tonic, nerve and stomach, J. B. Wells.	41,914
Water, purified, Standard Water Purifying Co.	41,892

LABELS.

"Buckeye," for crackers, Toledo Biscuit Co.	10,681
"Clay's Sure Cure for Rheumatism," for medicine, E. J. Kieffer.	10,689
"Faxon's Black & Green Tea," for tea, W. H. Faxon.	10,684
"Grell's Rose Leaf Brand Creamery Butter The Butter That Batters the Bread," for butter, H. J. Grell Butter & Egg Co.	10,680
"H. L. C. Tooth Bleach," for dentifrice, L. A. Jackson.	10,693
"Kremo Dentine," for tooth powder, T. H. Marshall.	10,692
"Martha Washington's Lily of the Valley Cream," for complexion cream, M. M. Benbow.	10,694
"Mauna Mountain," for coffee, Acker, Merrill & Condit Co.	10,683
"Nadine Face Powder," for face powder, National Toilet Co.	10,691
"Old Kaintuck," for cigars, H. G. Trompeter.	10,687
"Salax," for mineral water, E. Roberts.	10,685
"Santal," for medicine, F. L. McClintic.	10,688
"Santol," for medicine, H. E. Kelly.	10,690
"Seed Bolls from Our Potato Fields," for seed potatoes, Johnson Seed Potato Co.	10,678
"Swan Island Brand," for canned salmon, C. L. Benson.	10,679
"Toledo Flakes," for flakes, Toledo Biscuit Company.	10,682
"Wagner's Lithiated Vichy," for artificial mineral water, W. T. Wagner's Sons.	10,686

PRINTS.

"Adler's Spring Fashions for 1904, for men's apparel, David Adler & Sons Clothing Co.	886
"Art Shirt Waist," for shirt waists, Raymond & Pierce.	885
"Phenolene," for insect destroyers, A. E. Coulson Co.	883
"The Excelsior Dressmakers Fitting Saddle," for dressmakers' fitting saddles, M. L. Soule.	884

A printed copy of the specification and drawing of any patent in the foregoing list, or any patent in print issued since 1863, will be furnished from this office for 10 cents, provided the name and number of the patent desired and the date be given. Address Munn & Co., 361 Broadway, New York.

Canadian patents may now be obtained by the inventors for any of the inventions named in the foregoing list. For terms and further particulars address Munn & Co., 361 Broadway, New York.

RECENTLY PATENTED INVENTIONS. Electrical Devices.

INSULATED SUPPORT FOR WIRES.—L. STEINBERGER, New York, N. Y. The invention pertains to insulated clips, the more particular object being to improve the insulation and to attain certain advantages. The principal object is to insulate the conductor-wire from the hanger devices, span-wires, and poles and also to prevent arcing, surface leakage, and grounding of the current. The ear may be readily replaced when worn out. The insulating-body member will last indefinitely.

INSULATOR.—L. STEINBERGER, New York, N. Y. In this instance Mr. Steinberger's improvement relates to insulators for external use, and more particularly to the type commonly designated as "feed-wire" insulators. With many of the feed-wire insulators now in use considerable difficulty is found in securing insulation, especially where currents of high potential are concerned. The idea is to make an insulator which has considerable strength and in which every precaution is taken against leakage of the current.

Engineering Improvements.

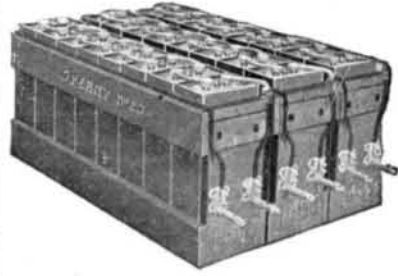
ROTARY EXPLOSIVE-ENGINE.—B. BANTA, and C. MATHEWS, Fenton, Mich. The invention is in the nature of an improved engine designed to actuate under an explosive mixture, reversible under two or more propelling impulses in a single revolution, and it primarily seeks to provide an engine of this character of a simple, compact, and durable nature, in which the use of toothed gear-wheels or disk connections are dispensed with and in which the parts are co-operatively arranged to effect an even and uniform operation and in which the action of reversing speed can be quickly accomplished.

Heating and Lighting.

SAFETY GAS-COCK.—H. J. DOLL, San Francisco, Cal. In this instance the invention pertains to improvements in safety gas-cocks; and the object of the inventor is to furnish a simple device which will insure the complete shutting off of the gas when the key is turned and which will also provide means for regulating the flow of gas independent of the key.

VAPOR GENERATOR AND BURNER.—Q. CRANE and J. RESTINE, San Diego, Cal. This vapor apparatus belongs to that class of generators and burners employed for heating pur-

SPERRY BATTERIES



FOR ELECTRIC VEHICLES

Manufactured by the
NATIONAL BATTERY CO.
BUFFALO, N. Y.



FOR GASOLINE CARS

New York Office
POSTAL TELEGRAPH BLDG.

The Incomparable WHITE With Limousine Body For Winter Use

Body detachable and readily replaced by tonneau.

THE Interior seats three people, and is sufficiently warmed from the generator to be comfortable in the coldest weather. No more precaution must be taken with a White to prevent freezing than with a water-cooled gasoline car.

America's Premier Car

Renowned the world over for reliability and flexibility of control. Steer the motive power, but so essentially different from ordinary "steamers," that this classification as commonly accepted, does not obtain.

Send for "The White Bulletin"

Sales Offices in all Principal Cities

WHITE SEWING MACHINE COMPANY CLEVELAND OHIO

5,000 sq. ft. of BLUE PRINTS in 24 Hours

THE FRANKLIN AUTOMATIC CONTINUOUS FEED ELECTRIC BLUE PRINT MACHINE prints continuously by Electric Light, day or night. Handles tracings of any length, size or kind. The tension is automatic and does not depend on skill of operator. Used by largest railroads and United States Government. Patented in United States, Canada and Europe. Made in two sizes, for 36 and 42-inch tracings. Send for descriptive circular.

WILLIAMS, BROWN & EARLE, Dept. L, 918 Chestnut St., Philadelphia.

AUTOMOBILE WHEELS

The P. & B. Tubular Steel Wheel is the best and strongest wheel made. Write for full information together with prices on quantities. The P. & B. Wheels are sold under a strong guarantee. Made true and stay true.

THE PARISH & BINGHAM CO.
1300 Hamilton St., Cleveland, O., U. S. A.

ARMATURE WINDING, RIGHT AND Left Handed.—An important paper for all amateurs. 17 illustrations. SCIENTIFIC AMERICAN SUPPLEMENT, No. 1139, price 10 cents. For sale by Munn & Co. and all newsdealers. Send for catalogue.

CRESTMObILE \$750
The BEST CAR Built in America

Proved by its Splendid Records. Tonneau for Four, \$850.

Other LOW Priced Models. Export Prices \$90 Extra.

CREST MFG. CO., Cambridge, Mass., U.S.A.

\$12 PER WEEK STEADY INCOME

Work at home. Send addressed envelope. You can start work the moment you receive our reply. No canvassing. Nothing to sell. Dep. S. A.

United Product Co., 200 B'wa, N. Y.

THE STEAM TURBINE; THE STEAM Engine of Maximum Simplicity and of Highest Thermal Efficiency. By Prof. R. H. Thurston. A valuable series of articles having cuts of some of the more efficient engines of this type—the Parsons', DeLaval, Dow, etc.; with exhaustive tables giving the result of tests and much general data on the subject. Contained in SUPPLEMENT Nos. 1306, 1307 and 1308. Price 10 cents each. For sale by Munn & Co. and all newsdealers.

poses, and the object is to provide features of construction which afford a very simple, inexpensive, practical, and convenient generator and burner that may be placed in the fire-chamber of a heating-stove, a kitchen-range, or a steam-boller for the generation and combustion of gaseous fuel therein from hydrocarbon liquids.

Machines and Mechanical Devices.

PUNCHING AND SHEARING MACHINE, ETC.—R. NORRIE, Rangoon, British Burma, India. In order to obviate defects in other machines for cutting metal, Mr. Norrie has devised a special form of shears in which instead of only cutting edges a blade works in between two other cutting edges, which has the effect of shearing out strips of the material being cut. This blade is mounted so as to enable the material being worked to pass on either side of it, which enables any length of cut to be made.

AUTOMATIC WEIGHING-MACHINE.—W. BROUGH, Baltimore, Md. In this patent the invention is an improvement in automatic weighing-machines, and is especially designed for use in weighing granular or pulverulent or powdered substances and may be employed to advantage in the weighing of coffee, tea, sugar or the like, and without any wasting of the material.

LIQUID-MEASURE.—H. J. BRANTLEY, Valdosta, Ga., and J. C. BRANTLEY, Marksville, Miss. The invention is an improvement particularly in that class of measures illustrated in an application for a former patent filed by these inventors. The present invention relates to improvements in the construction of the measuring vessel, in the connections thereof with the barrel or cask, so the measuring vessel can be leveled when applied for use, in the means for venting the measuring vessel and the cask, and in other improvements.

ADDING-MACHINE.—P. BURESH, Mapleleaf, Iowa. The purpose in this improvement is to provide a reliable machine of very simple construction and which may be conveniently and quickly operated and applied directly to the columns of figures to be added, and further, to provide an indicator which as the machine is moved down a column to be added will be at the right or at the left, or which may be made to cover or conceal the last figure added.

THREADING DEVICE.—S. B. BATTEY, New York, N. Y. In the present case the object of the improvement is to provide a threading device designed either for hand use or for use on sewing-machines to automatically push the sewing-thread through the needle-eye whenever the device is in active position and the needle moves into an uppermost position.

THREADING DEVICE FOR SEWING-MACHINES.—S. B. BATTEY, New York, N. Y. In this patent the purpose of the invention is the provision of an improved threading device for sewing-machines arranged to automatically thread the needle in case the thread breaks, hence requiring no stopping of the machine for threading purposes. The operator may throw the threading device into action at any time in case the automatic thread-controlled device should fail.

ECCENTRIC-SCREW BREECH-CLOSING-DEVICE.—P. DE NORDENFELT and E. TERNSTRÖM, 8 Rue Auber, Paris, France. In this patent the invention relates to an arrangement for facilitating the operation of the eccentric screw, particularly in heavy ordnance. Endeavors have already been made to facilitate such operation by means of bearing-balls on which the screw turns with less friction. However, this means is only an insufficient palliative in the case of heavy ordnance, because it does not diminish the variable resistance arising from the eccentric position of the center of gravity of the screw relatively to the axis around which it rotates.

SELF-THREADING SEWING-MACHINE.—DR. SUMNER B. BATTEY, 152 W. 49th Street, New York, N. Y. To do away with the perplexing necessity of any hand manipulation in threading a sewing machine, the inventor has devised a novel and simple construction of sewing machine, the salient feature of which is the mechanism which operates the threading device. This mechanism comprises a rocking lever, fulcrumed in a vertical slot on the inside of the machine head and operated by a cam in the periphery of a cam disk. The method of operation is as follows. When the machine is started, and the needle-bar in its travel upward has reached the height of its stroke, the cam, which is an offset and at the same time a continuation of a groove around the cam disk, engages the upper end of the fulcrumed lever and causes it to rock outward, thereby imparting an inward motion to the lower end of the lever and passing a plunger, carried by the lever through a guide way for the thread. The thread is thus pushed through the eye of the machine needle, whereupon it is caught by a rotating hook. The needle is then completely threaded before it enters the cloth, the entire operation taking place before a complete revolution of the machine has been completed, and consequently before a stitch has been made. The whole mechanism is thrown out of operation at near the end of the downward stroke of the needle bar and does not work again unless the thread breaks, when the operation of automatic threading is repeated by mere touching of a button.

SHUTTLE-THREADED.—O. R. JACQUES,