

TO CORRESPONDENTS.

"L. M. W. of N. Y."—From the model last received from you we perceive your genius is taking a new turn. We have no hesitation in saying that your last invention is the best one you ever presented to us for examination. It is certainly worth a patent and there is not a farmer in the country but what will patronize your invention as soon as it becomes known to him. Our fee for attending to your business, making the two sets of drawings, writing the specification, forwarding the model &c. will be 20 dollars besides the Patent office fee which is \$30 more. We understand your model perfectly well and it is quite sufficient for the Patent Office when accompanied with such drawings as we are accustomed to send.

"C. D. F. of Wis."—Your principle for producing the drummond light is not new and we should advise you to abandon the idea of getting letters patent. The principle of your water wheel possesses too much of the "Yankee Turbine" to claim as new, and we should also advise you to abandon that project too.

"J. A. & Sons, of Mass."—We are waiting anxiously for the return of those papers. Please send them along.

"J. C. of Savannah."—We have examined the letter to which you refer and find that we were correct in our former statement. Mr. O.'s name was not contained in it. We have now forwarded to Mr. O. the back Nos. of this vol. and entered his name as per your request. Many thanks for your continued kindness.

"N. G. S. of Mass."—The Rule of the Bevel is there different from the manner we insert such things—and on the responsibility and expense of the author. Yours can receive the same favor, which you will see is nothing more than right, as the rules are to be found so correct for all in Scott's Work.

"B. A. of R. I."—We have noticed the Altituder in the Franklin Journal before.

"C. L. of Conn."—Give your rule more attention in compound numbers, and tell us the result.

"J. C. of Mass."—Your patent will likely be issued next week.

"H. M. C. of Ohio."—We are not aware that any institution has ever made an offer for a machine to bore brush blocks. They are very extensively used in Lansingburg, N. Y.

"F. H. of Boston."—If you have the back Nos. of the 4th Vol. of the Scientific American you will find in one of them a very valuable receipt for welding cast steel and malleable iron together.

"R. H. A. of Mich."—Your business shall be attended to as soon as your model comes to hand. Our board of examiners are second only to the company of examiners under Hon. E. Burke at the Patent Office Washington, and you can rely upon your business being faithfully attended to by us. Your invention is an important one and we do not blame you for being particular that it be placed in responsible hands for attention.

"R. D. of Pa."—The wood cuts you order, have been previously sold.

"W. W. of Penn."—We cannot furnish you with the first Nos. of Vol. 3, as the they are all exhausted, the \$3 has been applied to your subscription account.

"L. B. S. of Ga."—The Engineer's Magazine is published in Glasgow, and we are not aware that an agency has been established for its sale in New York.

"J. P. of N. Y."—Your Water Wheel presents nothing particularly new, therefore we would advise you to abandon the idea of making application for the letters patent. The principles combined in it are the same as a model now in our office, which has been rejected by the Commissioner of Patents. The specifications and drawings were executed at another agency and proved defective. We are now engaged in modifying the whole matter, and if we succeed in securing Letters Patent, (and there seems a strong probability) the whole ground will be covered, and of course will preclude the possibility of your success.

"T. J. of Pa."—You will get your letter at Harrisburg.

"A. B. of Va."—We have answered you by mail, also "C. & K. of Mich."

"N. W. H. of Va."—We have deposited

\$50 with Messrs. A. B. & D. Sands in compliance with your request. The receipt for the money paid to Messrs. S. we will send you in a few days.

"H. M. of Mass."—Your model has been received, but for want of time we shall not be able to examine it thoroughly until next week, the principle seems to be good, and doubtless you will succeed; you will hear from us in a few days.

"C. B. H. of N. Y." "S. T. of N. H." and "M. C. of Mass."—Your specifications were received, properly signed, and have been forwarded to the Patent Office.

Advertisements.

This paper circulates in every State in the Union, and is seen principally by mechanics and manufacturers. Hence it may be considered the best medium of advertising, for those who import or manufacture machinery, mechanics tools, or such wares and materials as are generally used by those classes. The few advertisements in this paper are regarded with much more attention than those in closely printed dailies.

GENERAL AGENTS

FOR THE SCIENTIFIC AMERICAN.
New York City, Geo. Dexter.
Boston, Messrs. Houghton & Co.
Philadelphia, Stokes & Brother.

LOCAL AGENTS.

Albany, Peter Cook.
Andover, Mass., E. A. Russell.
Baltimore, Md., S. Sands.
Bermuda Islands, Washington & Co.
Bridgeport, Ct., Sanford & Corewall.
Cobsville, Mass., E. F. Brown.
Concord, N. H., Rufus Merrill.
Cincinnati, O., Stratton & Barward.
Dover, N. H., D. L. Norris.
Fall River, Mass., Pope & Chase.
Hartford, Ct., E. H. Bowers.
Houston, Texas, J. W. Copps & Co.
Halifax, Nova Scotia, E. G. Fuller.
Jamestown, N. Y., E. Bishop.
Lynn, Mass., J. E. Marsh.
Middletown, Ct., Wm. Woodward.
Norwich, Ct., Safford & Parks.
New Haven, Ct., E. Downs.
Newburg, N. Y., S. A. White.
Newark, N. J., J. L. Agnew.
Newark, N. J., Robert Kashaw.
New Orleans, La., J. C. Monahan.
Paterson, N. J., A. H. Dowdall.
Providence, R. I., H. & J. S. Rowe.
Rochester, N. Y., D. M. Dewey.
Springfield, Mass., Wm. B. Brooker.
Salem, Mass., M. Bessy.
Saco, Me., L. Chandler.
Savannah, Geo. Isaac Crooker.
Syracuse, N. Y., John Caruthers.
Trenton, N. J., W. L. Palmer.
Utica, N. Y., W. F. Seayber.
Vicksburg, Miss., G. H. Beechley.
Williamsburgh, J. B. M.
Webster, Mass., J. C. Gardner.
J. M. Shumway.

CITY CARRIERS.

CLARK SELLECK, SQUIRE SELLECK.
Persons residing in the city or Brooklyn, can have the paper left at their residences regularly, by sending their address to the office, 128 Fulton st., 2d floor.

DICK'S ANTI-FRICTION PRESS.

This Press, which was patented in October last, combines great simplicity of construction with intense severity of operation, compactness, convenience for use and cheapness, and is admirably adapted to a great variety of purposes, such as pressing Oils, Cotton, Tobacco, Hemp, Hay, Cheese, Cloth, Paper &c.; Baling goods; Embossing and Printing; Envelope Cutting; Jeweller's work; Shearing Metals; Hoisting; Making Lead-pipe; Punching and Cutting Iron &c. &c. Orders and Communications to be addressed to WM. D. HARRIS, 136 3m* Agent for the Patentee, 138 Front st. N. Y.

JUST PUBLISHED—INSTRUCTIONS FOR COLLECTING, TESTING, SMELTING AND ASSAYING GOLD.

With a description of the process for distinguishing native Gold from the worthless ores which are found in the same locality, and the chemical tests and necessary apparatus to be used for testing Gold, Silver, Platina and Mercury; illustrated with 30 Wood engravings, and arranged for the use of persons who are about to visit

The Gold Regions of California.

By EDWARD N. KENT, Practical Chemist. Price 25 cents. For sale by the author, at 116 John street. Booksellers supplied on the usual terms. 16 3t*

To all Persons interested in Wood Planing Machines.

LEAVITT & M'DANIEL, Fishersville, N. H., Manufacturers of Mill, Circular, Tennon, Cross-cut, and Pit Saws. Also, Felloe, Turning and Veneering Saws; Billet or Wood Cutters' Saws; Iron or Brass Web Saws, Pruning and Butcher's Bow Saws, Chest, Hand, Pannel and Rippling Saws. Also, Plastering Trowels. J. McDaniel, Concord, Wm. D. Leavitt, Fishersville. RUFUS R. LEE, Manufacturers' Agent, No. 11 Kilby st. (up stairs) 430 3m* Boston, Mass.

SAW MANUFACTORY.

The undersigned having discovered a new and simple arrangement, by which to effect the matching or tongue and grooving of boards or plank; takes this method to inform those interested that it is superior to the cutter wheel. My object is to interest men who have the means, and disposition to take hold of the matter in earnest; and I think there will be but little difficulty in completing a machine about which no questions of law for infringement can arise. For particulars address JUNIUS JUDSON, Buffalo, N. Y. 430 21*

STEAM BOILERS.

BENTLEY'S Patent Tubular and other Boilers of any size, shape or power, made to order, by SAMUEL C. HILLS & CO. 43 Fulton st. 416 4t*

Patent Agency.

From our long acquaintance and experience in Patent Office business we have no hesitancy in asserting that we are better able to judge the merits of new inventions, and are better capable of advising upon all subjects pertaining to Patents than any other concern in the United States.

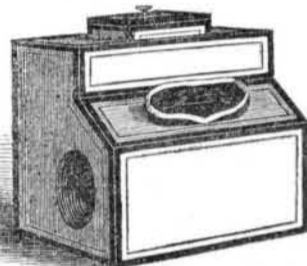
Any business connected with the Patent office may be done by letter through the Scientific American office with the same facility and certainty as though the inventor applied in person. During the past 3 years we have been constantly applying for Patents and what is a remarkable fact but 2 cases have been refused at the Patent Office and those 2 were afterwards granted by reapplication. Our prices too (another important consideration to inventors) are but about half as much as the charges of most agents as the amount of business which we do, and that in connection with the publication of the Scientific American renders to us superior advantage over all other agents.

Having been often complimented by those who have entrusted their business in our care, we here repeat what very many have said. "The best Patent Agency in the United States is at the Scientific American office."

All models, drawings or communications that are sent to the Scientific American office for inspection are deposited from the eyes of the public until the necessary application for securing the invention has been made.

The best of artists are constantly employed to make drawings from models and our corps of specification writers are composed of gentlemen formerly connected with the Patent office at Washington as Examiners.

All communications should be addressed to MUNN & CO. Scientific American Office. Post Paid. (d16) New York.



CAMERA LUCIDA.

The above engraving represents a beautiful little instrument designed as an assistant in the art of Drawing. By the simple arrangement of a mirror and lenses in this instrument a most perfect representation of the object desired to be drawn is thrown down upon the paper in front of the operator, who has but to trace the outline of the miniature represented, to produce a correct picture. The instruments are very simple in their construction and not liable to get out of repair. To any one engaged in draughting from models, machinery or even landscapes, these instruments are of great service. We have made such arrangements with the manufacturer that we can furnish them in any quantity at short notice.

Price single—nicely boxed for shipping—6 dollars. They can be sent to any part of the world with perfect safety. Address, post paid, MUNN & CO. 430 tf Scientific American Office, New York.

BOOKS FOR SALE.

We have now on hand a few more beautifully illustrated bound copies of Ewbanks Hydraulics and Mechanics. Price 2.50.
Leonard's Mechanical Principia. Containing all the various calculations on water, Steam Power and machinery used in Manufacturing together with many valuable Tables. Price \$1.50.
Six Lectures on the uses of the Lungs; and causes, Preventative, and cure of consumption, asthma, and the diseases of the heart, on the laws of longevity; and on the mode of preserving male and female health. Illustrated by 28 engravings. By Samuel S. Fitch M. D. Price 50 cents.

Woman her Education and influence; by Mrs. Read, with an introduction and illustrations. Price 40 cents.

Interesting lectures upon the Philosophy of Mesmerism, by the celebrated J. B. Dods. Price 25 cents.

Matrimony or Phrenology and Physiology applied to the Selection of congenial companions for life, including directions to the married for living together affectionately and happy. By O. S. Fowler.—25 cents.

The above works can be sent by mail to any part of the country. Address (post paid) MUNN & CO.—Scientific American. 430

Lap welded Wrought Iron Tubes FOR TUBULAR BOILERS.

From 1 1/4 to 6 inches diameter, and any length, not exceeding 16 feet.

THESE Tubes are of the same quality and manufacture as those extensively used in England, Scotland, France and Germany, for Locomotive, Marine and other Steam Engine Boilers.

THOMAS PROSSER, Patentee, 28 Platt street, New York 430

Johnson's Improved Shingle Machine.

THE Subscriber having received Letters Patent for an improvement in the Shingle Machine, is now ready to furnish them at short notice, and he would request all those who want a good machine for sawing shingles, to call on him and examine the improvements he has made, as one eighth more shingles can be sawed in the same given time than by any other machine now in use. Manufactured at Augusta, Me. and Albany, N. Y. J. G. JOHNSON. Augusta, Maine, Oct. 28, 1848. 028 1y

Agricultural Implements.

Inventors and Manufacturers of superior Agricultural Implements may find customers for their goods by applying at the Agricultural Warehouse of S. C. HILLS & CO. 43 Fulton st. n8

SOAPSTONE DUST.

FINE Botted Soapstone Dust; also Charcoal, Anthracite, and Black Lead Dust, to give Iron Castings a fine face; and Sea-Coal Dust to mix with sand to make the sand leave the castings easily; always on hand in Barrels ready for shipment by G. O. ROBERTSON. 283 West 17th st. New York 416 4t*

GENERAL PATENT AGENCY.

REMOVED.
THE SUBSCRIBER has removed his Patent Agency from 189 Water to 43 Fulton street. The object of this Agency is to enable Inventors to realize something for their inventions, either by the sale of Patent Goods or Patent Rights. Charges moderate, and no charge will be made until the inventor realizes something from his invention. Letters Patent will be secured upon moderate terms. Applications can be made to the undersigned, personally or by letter post paid. n8 SAMUEL C. HILLS, Patent Agent.

Johnson & Robbins, Consulting Engineers and Counsellors for Patentees. Office on F street, opposite Patent Office, Washington, D. C. j17 tf

PREMIUM SLIDE LATHE.

THE subscriber is constantly building his improved Lathes of all sizes, from 7 to 30 feet long, and can execute orders at short notice. JAMES T. PERKINS, Hudson Machine Shop and Iron Works, Hudson, N. Y. m11

Machinery.

PERSONS residing in any part of the United States who are in want of Machines, Engines, Lathes, OR ANY DESCRIPTION OF MACHINERY, can have their orders promptly executed by addressing the Publishers of this paper. From an extensive acquaintance among the principal machinists and a long experience in mechanical matters they have uncommon facilities for the selection of the best machinery and will faithfully attend to any business entrusted to their care. MUNN & CO. a15

Those Hats

KNOX of 128 Fulton street, is on hand with his Autumn style of Hats, and as usual furnishes a little prettier shape, made of a little better material and for a much less price than many of his Broadway friends who boast of the superiority of their productions. The public won't swallow that gammon, gentlemen, and you had better put your prices down to Knox's standard price, before he detracts all those regular customers from Broadway into Fulton st. 07

Daniel's Patent Planing Machine.

WE have now on hand one of these machines which we will dispose of for the very low sum of \$250. It is capable of planing boards, timber or any stuff from 16 ft long by 22 inches wide, down to pieces of the smallest dimensions. It is so simple as to be easily managed by a boy, and operates with great rapidity and beauty. Any number of pieces of different thickness or lengths can all be planed down even at one operation. It performs a day's labor of one man in 20 minutes.

We can send it with perfect safety to any part of the United States. MUNN & CO. Scientific American Office, New York. Letters must be Post Paid. n18

SUPERIOR ENGINE LATHES.

WE are manufacturing and selling at our establishment in New London, Ct. a superior article of Screw Engine lathes and also hand lathes of every dimension at an extremely low price. Address ALBERTSON, DOUGLASS & CO. Post Paid [d2 6m*] New London, Ct.

GURNEY'S PREMIUM DAGUERRIAN GALLERY.—No. 189 Broadway.

The oldest establishment of the kind in the city. All persons wishing a perfectly finished Picture in every respect would find it to their advantage to call and examine the Pictures taken by his New Process and for which the first Premium, a silver medal, was awarded at the late fair of the American Institute for 1848. d16 3m*

Portable Saw Mill.

FOR SALE CHEAP.—A first rate up and down saw, for boards, planks and heavy work, already fitted up with frame, table, fly wheel, &c. Length of saw 4 feet 6 inches. Price for the whole \$60.

Also for sale, a first rate up and down saw for sawing out curves. It is in complete order, already set in frame, with table, fly wheel, band pulley, &c.—Length of saw 2 ft. 6 in. Price for the whole \$25.

They can be sent with perfect safety to any part of the country. Any one wanting either or both the above has only to enclose the amount named and the saws shall at once be forwarded. MUNN & CO. Scientific American Office, New York. n4

ENAMELLED WARE.

FOR sale, the right to manufacture Enamelled Ware will be sold either for one State or more. This ware is pronounced by all that have seen and used it, to be equal to the English. Samples of different colors can be seen at this office. To fit up for to Enamel Ware will not cost over \$200. This business can be carried on with ready sale, and will yield a heavy profit, for the cost is very little. None but responsible men need apply. All letters must be post paid, and stating particularly what kind of ware they want to Enamel and for what state. Address "Enamelled Ware" care of Munn & Co. 128 Fulton st. New York. d23 3t*

To Mill Owners.

HAVILAND & TUTTLE'S Patent Centre Vent Pressure Water Wheel.—These wheels are now in successful operation in many towns in Maine, Massachusetts, and Rhode Island, and are found to surpass in power and facility of adaptation any water wheel now in use. This wheel was awarded the silver medal at the Fair of the American Institute recently held in New York and a diploma at the Mechanics' Fair in Boston.

The wheels are manufactured and for sale by the FULTON IRON FOUNDRY CO., South Boston, Mass.,—where the wheels can be seen and any information concerning them had.

Patent Rights for different States, Counties, &c. for sale, as above. 014 3m*

WALKING BEAM ENGINE.

THE engine and boiler represented in No. 9 of present vol. of the Scientific American is again for sale. Several opportunities for disposing of it have been offered and refused in consequence of its having been sold to a gentleman from the country but now he expresses his inability to meet the terms which we require (cash in advance) and the engine is therefore offered for sale again. Any person now desiring it can have it shipped to his address for \$150 cash which is \$25 less than it is actually worth. Address MUNN & CO. "First come first served." 128 Fulton St. N. Y.