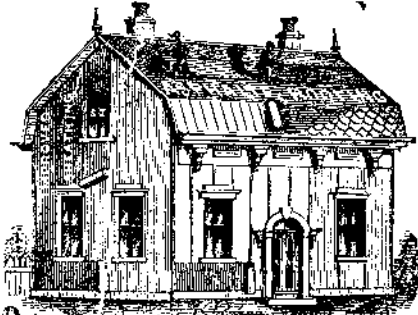


Advertisements

Advertisements will be admitted on this page at the rate of \$1.00 per line for each insertion.

ASPHALTE ROOFING FELT.



A CHEAP, durable, and light permanent Roofing for Ball Road Depots, Engine Houses, Foundries, etc. Also, Improved Sheathing Felt and general Roofing materials.

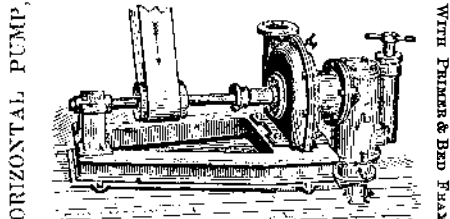
3100 SAVED IN LEARNING TELEGRAPHY

THE NONPAREIL TELEGRAPH APPARATUS including Key, Sounder, Battery, Chemicals, Wire, also, an ILLUSTRATED INSTRUCTION BOOK!

MERRILL'S DROP HAMMERS—Two, of Six Hundred pounds each. One has Gullard's improvement.

Machinist's Tools, EXTRA HEAVY AND IMPROVED. LUCIUS W. POND, MANUFACTURER.

THE HEALD & SISCO



PATENT CENTRIFUGAL PUMPS, VERTICAL AND HORIZONTAL. ARE USED ALL OVER THE UNITED STATES and the Canadas, and also in Great Britain.

MORRIS, TASKER & CO., MANUFACTURERS OF AMERICAN CHARCOAL IRON Boiler Tubes. WROUGHT-IRON TUBES AND FITTINGS, FOR GAS, STEAM, WATER, AND OIL.

WIRE ROPE. JOHN A. ROEBLING'S SONS. MANUFACTURERS, TRENTON, N. J. FOR Inclined Planes, Standing Ship Rigging, Bridges, Ferriss, Stays, or Guys on Derricks & Cranes.

American Saw Co.



EMERSON'S PATENT SAW. ONE POUND OF TEETH SAWS. EMERSON'S PATENT SAW. PATENTED APRIL 25 1871.

MICROSCOPES.

For Scientific Investigations and the Entertainment of the Family Circle. ILLUSTRATED Price List sent free on application.

5000 AGENTS WANTED.—Samples sent free by mail, with terms to clear from \$5 to \$10 per day.



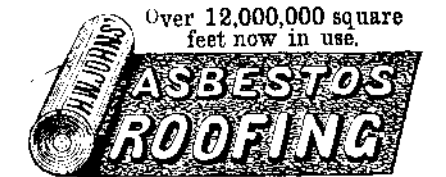
SCHLENKER'S PATENT BOLT CUTTER

BEACH'S Scroll Sawing Machine, Improved guaranteed the cheapest and best in use. Thirty days' trial given.

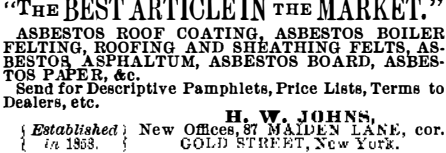
Malleable Iron. Having recently added to our works a Malleable Iron Foundry, we solicit orders for stated supplies of MALLEABLE IRON CASTINGS.

TO INVENTORS. The "Consolidated Fruit Jar Company," having superior facilities for Manufacturing Spun, Pressed, or Stamped Sheet Metal Goods.

Over 12,000,000 square feet now in use. ASBESTOS ROOFING. FIRST PREMIUM (MEDAL) AWARDED IN 1870, AND ENDORSED BY CERTIFICATE FROM THE AMERICAN INSTITUTE IN 1871, AS "THE BEST ARTICLE IN THE MARKET."



THE BEAUTIFUL NATIONAL WIRE MATTRESS. WOVEN WIRE MATTRESS CO., Hartford, Conn. Sole Manufacturers.



PORTLAND CEMENT. OF the well known manufacture of John Bazley White & Brothers, London, for sale by JAMES BRAND, 55 CHURCH ST., N. Y.

SUPER-HEATERS. Save fuel, and supply DRY steam. Easily attached to any boiler. HENRY W. BULKLEY, Engineer.

Pyrometers. For Ovens, Boiler flues, Blast furnaces, Super-Heated Steam, Oil Stills, &c. Address: HENRY W. BULKLEY, 98 Liberty St., New York.

RANSOM SYPHON CONDENSER perfects and maintains vacuum on Steam Engines at cost of one per cent. of its value, and by its use Vacuum Pans are run with full vacuum without Air Pump.



\$75 to \$250 per month, everywhere male and female, to introduce the GENUINE IMPROVED COMMON SENSE FAMILY SEWING MACHINE.

PATENT COLD ROLLED SHAFTING.

The fact that this shafting has 75 per cent greater strength, a finer finish, and is truer to gage, than any other in use, renders it undoubtedly the most economical.

The Wheat Field of America!

Healthful Climate, Free Homes, Good Markets. THE NORTHERN PACIFIC RAILROAD offers for sale its Lands in Central and Western Minnesota.

Grain can be shipped hence by lake to market as cheaply as from Eastern Iowa or Central Illinois. Cars now run through these Lands from Lake Superior to Dakota.

SOLDIERS under the New Law (March, 1872) get 160 acres FREE near the railroad, by one and two years' residence.

TRANSPORTATION AT REDUCED RATES furnished from all principal points East to purchasers of Railroad Lands, and to Settlers on Government Homesteads.

SEND for Pamphlet containing full information, map and copy of New Homestead Law. Address: LAND DEPARTMENT, NORTHERN PACIFIC RAILROAD, ST. PAUL, MINN., OR 23 FIFTH AVENUE, Cor. 9TH ST., NEW YORK.

BUILDERS

MAHOGANY, ROSEWOOD, FRENCH WALNUT, SATIN WOOD, HUNGARIAN ASH, CEDAR, ETC.

Large and Choice Stock Foreign and Domestic Woods, in VENEERS, BOARDS, AND PLANK. Imported and Manufactured by GEORGE W. READ & CO., 170 & 172 Centre St., N. Y.

MENAB & HARLIN Manufacturing Co., Manufacturers of BRASS COCKS FOR STEAM, WATER AND GAS. WROUGHT IRON PIPE AND FITTINGS.

T. V. Carpenter, Advertising Agent. Address Box 773, New York City.

PETER COOPER'S

Refined Neats' Foot Oil, FOR FIRST CLASS MACHINERY.

It contains no gum or acid, and is warranted pure and equal to the best sperm oil.

The Tanite Co.,

Inventors and Builders of Special Machinery connected with Emery Grinding.

Solid Emery Wheels, from 1/4 inch to 2 feet in diameter Emery Grinding Machines at \$15, \$30, \$50, \$75, and \$110.

By means of extensive additions to their factory and machinery, THE TANITE CO. are now (September, 1872) enabled to triple their former production.

THE TANITE CO'S EMERY WHEELS and EMERY GRINDING MACHINES

Are kept in Stock, and sold at Factory Prices, by CHAMPLIN & ROGERS, 155 Fifth Avenue, Chicago.

THE TANITE CO. do not Exhibit or Compete at any Fair in the United States this Year.

THE TANITE CO'S

GOODS are kept in Stock and sold at Factory Prices, by CHAMPLIN & ROGERS, 155 Fifth Avenue, (Vermont Block) New York.

PANCOAST & MAULE PHILADELPHIA PA.

IMPROVED CAST IRON RADIATORS SEND FOR CIRCULAR.

WOOD WORKING MACHINERY

With over one hundred plates and engravings of English, French, and American Machines. With a History of the Origin and Process of Wood Machine Manufacture since the Year 1790.

Diamond-Pointed STEAM DRILLS

THE adoption of new and improved applications to the celebrated Leachot's patent, have made these drills more fully adaptable to every variety of ROCK DRILLING.

STEAM BOILER AND PIPE COVERING

Saves ten to twenty per cent. CHALMERS SPENCE CO., foot E. 9th St., N. Y.; 1202 N. 2nd St., St. Louis Mo.

ISAAC S. CASSIN, Engineer, late Chief Engineer of the Philadelphia Water Works, No. 481 Race St., Philadelphia, Pa.

FOR SALE AND EXCHANGE—Sahlstrom's PATENTS: Foot-Scraper, Egg-Tester, Comb-Cleaner. Address A. SAHLSTROM, Pierce City, Mo.

NOTICE TO BRIDGE BUILDERS AND ENGINEERS.

In pursuance of a resolution of the Select and Common Councils of the City of Philadelphia, Plans and Estimates are invited for a bridge of no less than one hundred feet in width, across the Schuylkill river, at Girard avenue.

LEFFEL IMPROVED DOUBLE TURBINE WATER WHEEL. 6000 IN USE.

NEW WHEEL BOOK 152 PAGES, FOR 1872. SENT FREE. JAMES LEFFEL & CO. SPRINGFIELD, O. 109 LIBERTY ST., NEW YORK CITY.

Working Models

And Experimental Machinery, Metal, or Wood, made to order by J. F. WERNER, 62 Center st., N. Y.

THE "Scientific American" is printed with CHAS. ENEU JOHNSON & CO'S 18k. Tenth and Lombard sts., Philadelphia and 59 Gold st., New York